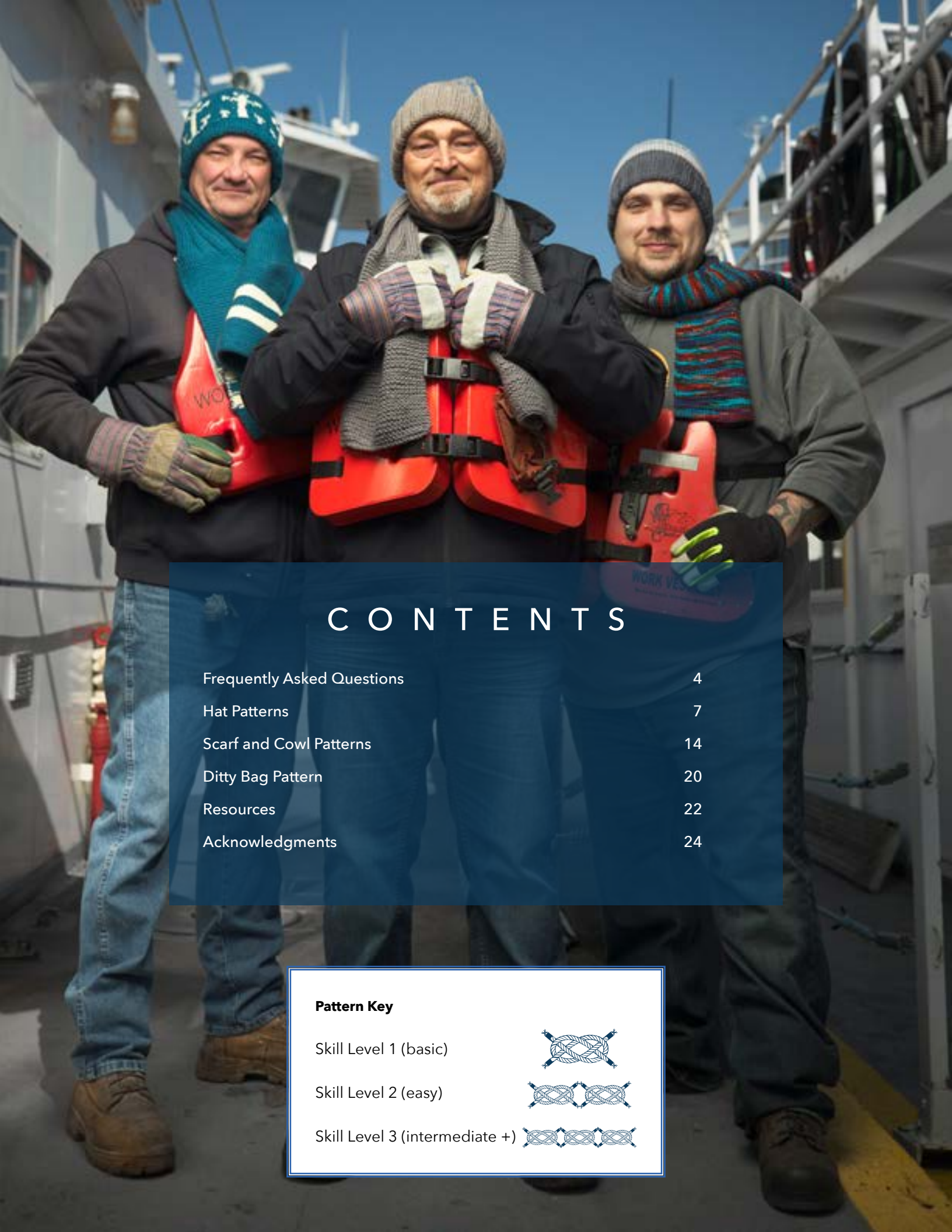


Christmas at Sea Handbook



Welcome to Christmas at Sea!

There are many ways to get involved. For knitters and crocheters, we offer specially designed patterns complementing the safety gear worn on board vessels. There are patterns for every skill set, from beginner to advanced. Our drawstring ditty bags, used for packing, are popular among volunteers who enjoy sewing.



C O N T E N T S

Frequently Asked Questions	4
Hat Patterns	7
Scarf and Cowl Patterns	14
Ditty Bag Pattern	20
Resources	22
Acknowledgments	24

Pattern Key

Skill Level 1 (basic)



Skill Level 2 (easy)



Skill Level 3 (intermediate +)



The origins of Christmas at Sea (CAS) can be traced back to the Women's Council of the Seamen's Benefit Society. Founded in 1898 by philanthropist, Augusta de Peyster, the Council supplied seafarers with "comfort bags" while they were off at sea during the Spanish American War.

Over the course of the 20th century its mission expanded, as well as its geographic reach, to include U.S. inland waterways. CAS began receiving donations from all over the country. Gift bags were distributed each year around Christmastime, a tradition that continues to this day.

Today's program engages over 1,000 volunteers from the United States and abroad. These dedicated volunteers knit, crochet, and sew ditty bags following our specially-designed patterns complementing the safety gear worn on board vessels.

The patterns featured in this handbook are a sample of our most popular patterns. There is something for everyone on every skill level. Additional patterns are available to download for free on the "Patterns and Publications" section of our website, seamenschurch.org.

As a CAS volunteer, you are joining a supportive community of fiber artists. CAS delivers the highest volume of gifts to international seafarers of any nonprofit, and we are the only chaplaincy delivering handmade gifts to the thousands of professional U.S. mariners at work aboard towboats, harbor tugs, and dredges on the Mississippi River system and the Gulf Intracoastal Waterways. We are only able to accomplish this because of the active support of our fiber artists, packers, and donors.



FREQUENTLY ASKED QUESTIONS

What types of fiber are acceptable?

Please use the fiber you enjoy working with and you have available. You may use wool, washable wool, wool blends, or acrylics—it is your preference. If you are using wool or something special like cashmere, we recommend that you attach a note, so the recipient knows not to put it in the dryer. All patterns have a recommended yarn weight and gauge. *Fun fur*-like material is not recommended for CAS.

Is there a deadline to mail packages?

CAS is a seamless program—we welcome packages year-round. Donations received after December 15th are usually rolled over into the following year.

As most mariners are men, do I need to stick with a traditionally masculine color palette?

While most of the maritime workforce is male, we find that seafarers and mariners love bright colors as well as the more traditional dark color palette. Our only recommendation is to avoid pastels. Delicate colors get grimy fast. Bright colors do not pose a security threat. Required safety gear is usually fluorescent.

Must I affix a gift tag to my garments, and if so, how can I get CAS gift tags?

It is not a requirement to attach a gift tag, however, it is extremely helpful and a time saver when donations arrive already tagged. Contact us at CAS@seamenschurch.org for SCI gift tags, or you may create your own by downloading the PDF file from the "Patterns and Publications" page of our website to print at home. The gift tag sheets are designed to fit nine on an 8.5"×11" sheet of paper. If you prefer, you may create your own unique gift tags.

Please include your first name and the initial of your last name on your tags. We encourage you to identify your state or if outside the United States, your country. You may also include a short message. Please do not use safety pins to affix your gift tags as they can damage your items! Instead, tie a gift tag onto your item using a length of thread, yarn, or ribbon that can be looped through the weave.

Which garments do you need more of?

We get this question a lot. Somehow, it always balances out. For every volunteer who likes to make hats, there is someone who makes scarves. Please make your favorite patterns. We want you to have fun. If you decide to make a set, such as a hat and scarf or cowl, we will keep the pieces together. We do not separate sets.

What if I get stuck on a pattern?

Our CAS Angels are an international group of experienced knitters and crocheters who are familiar with our patterns. You can find them online. Should you have a question about a pattern, we encourage you to join our private Facebook page, Untangled, by visiting facebook.com/groups/untangled.sci, where you will receive answers to your most challenging questions.

Do I have to follow a CAS pattern exactly?

Our patterns are designed to complement the work and safety gear seafarers and mariners wear on board their vessel. While we encourage you to use our carefully crafted patterns, if your item meets our guidelines, we don't mind if you have a preferred method of decreasing, want to incorporate a decorative pattern, or use your favorite cast-on.

We cannot accept items that have tassels, pompoms, braids, fringe, or are too long. These types of variations pose a safety hazard. If we cannot remove the element, we will donate that piece to another worthy local charity. We evaluate every piece that is delivered to make sure it is appropriate, so please follow the essence of our patterns should you decide to use a different one.

What is a ditty bag and what goes into one?

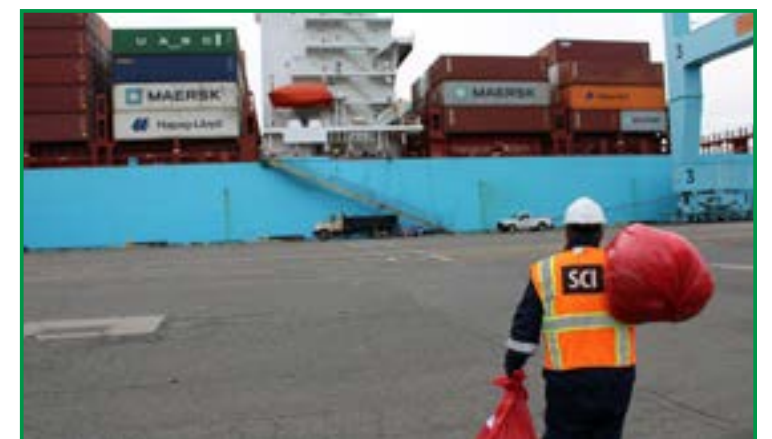
Ditty bags are drawstring pouches that are used as gift bags in Port Newark. In addition to 2 knit or crocheted pieces, we include several travel size toiletries, such as shampoo, conditioner, and body wash; a generous handful of wrapped candy, gum and/or microwaveable popcorn; playing cards and puzzles; and a personalized Christmas card.

How can I participate if I'm not a crafter?

There are many ways to get involved. CAS is not just for crafters. In the fall we welcome church and community groups who dedicate a morning or afternoon to assembling gift bags and personalizing Christmas cards. One of the hallmarks of our program is that it is highly personal. Christmas cards with handwritten messages go a long way in brightening spirits of mariners far from home during the holidays. Seafarers and mariners find it difficult to come by many of the personal care items they bring to our shores. Collections of travel size toiletries are always welcome, along with nonperishable treats, such as granola bars, gum, individual pouches of hot chocolate and microwavable popcorn. We gladly accept leftover Halloween candy.

How do the gifts get delivered?

In Port Newark, our SCI Chaplains deliver Santa Sacks to vessels calling at the Port of New York and New Jersey from the first week in December into January. SCI Ministry on the River (MOR) Chaplains work directly with towboat companies to make sure mariners working over Christmas receive gifts.



HAT PATTERNS

SEAFARER'S WATCH CAP IN THE ROUND • K N I T •



About this Pattern: We modified our famous Seafarer's Watch Cap to be knit in the round.

Note: Please pay attention to the gauge. If your gauge is larger, cast on fewer stitches in a multiple of 12. For example, at 16 stitches/4 inches, then cast on 72.

Cast on 84 stitches. Place marker and join to work in the round, being careful not to twist.

Brim: Work in k2, p2 ribbing for 4".

Hat Body: Knit every round (stockinette stitch) for 5.5".

Shape Crown: *K10, k2tog, repeat from * to end of round. (77 sts) Knit 1 round.

*K9, k2tog, repeat from * to end of round. (70 sts) Knit 1 round.

*K8, k2tog, repeat from * to end of round. (63 sts) Knit 1 round.

*K7, k2tog, repeat from * to end of round. (56 sts) Knit 1 round.

*K6, k2tog, repeat from * to end of round. (49 sts) Knit 1 round.

*K5, k2tog, repeat from * to end of round. (42 sts). Knit 1 round.

*K4, k2tog, repeat from * to end of round. (35 sts) Knit 1 round.

*K3, k2tog, repeat from * to end of round. (28 sts) Knit 1 round.

*K2, k2tog, repeat from * to end of round. (21 sts) Knit 1 round.

*K1, k2tog, repeat from * to end of round. (14 sts)

K2tog to end of round. (7 sts)

Note: Switch to dpns when there are too few stitches to knit comfortably on the circular needle.

Finishing: Cut yarn, leaving a tail of 6". With tapestry needle, pull through remaining stitches tightly, secure end on inside. Weave in ends.

Skill Level 2:



Finished Measurements:
One size, fits adult head

Materials: Approximately
200 yards worsted
weight yarn

US size 6 or 7 16" circular
needle and set of dpns, or
size needed for gauge

Stitch marker

Tapestry needle

Gauge: 18 stitches & 24
rounds = 4 inches square
in stockinette stitch





SEAFARER'S WATCH CAP

• KNIT FLAT ON STRAIGHT NEEDLES •

About this Pattern: SCI is known for its watch cap the world over!

Note: Please pay attention to the gauge. If your gauge is larger, cast on fewer stitches in a multiple of 12. For example, at 4.5 stitches/inch, cast on 84. At 4 stitches/inch, then cast on 72.

Brim: Cast on 84 stitches. Work in k2, p2 ribbing for 4".

Hat Body: Knit every row (garter stitch) for 5.5", or 40 rows (20 garter ridges).

Shape Crown: *K10, k2tog, repeat from * to end of row. (77 sts) Knit 1 row.
*K9, k2tog, repeat from * to end of row. (70 sts) Knit 1 row.
*K8, k2tog, repeat from * to end of row. (63 sts) Knit 1 row.
*K7, k2tog, repeat from * to end of row. (56 sts) Knit 1 row.
*K6, k2tog, repeat from * to end of row. (49 sts) Knit 1 row.
*K5, k2tog, repeat from * to end of row. (42 sts) Knit 1 row.
*K4, k2tog, repeat from * to end of row. (35 sts) Knit 1 row.
*K3, k2tog, repeat from * to end of row. (28 sts) Knit 1 row.
*K2, k2tog, repeat from * to end of row. (21 sts) Knit 1 row.
*K1, k2tog, repeat from * to end of row. (14 sts) Knit 1 row.

To Join Crown with Kitchener Stitch: Knit 7 stitches.

With 7 stitches on each needle, cut yarn, leaving about 20" for seaming and thread tapestry needle. Fold cap so both needles are even and parallel, with working yarn extending from the right-hand end of back needle. While working, always keep yarn under the knitting needles.

Weave stitches from front and back needles together with Kitchener stitch as follows.

Set up: Pass tapestry needle through first stitch on front knitting needle as if to purl, leaving stitch on needle. Pass through first stitch on back needle as if to knit, leaving stitch on needle.

*Pass tapestry needle through first stitch on front needle as if to knit, and slip stitch off the needle.

Pass through second stitch on same needle as if to purl, pull yarn through, but leave stitch on needle.

Pass through first stitch on back needle as if to purl, slip stitch off.

Pass through second stitch on back needle as if to knit, leaving stitch on needle.

Skill Level 1:



Repeat from * until all stitches are off the needles.

Pull yarn through and fasten securely, leaving extra yarn to sew up seam.

Sew Seam: Place edges of cap adjacent to each other, pattern matching. Picking up outside loop of stitch from each side, sew back and forth, drawing through two edges securely from top of crown to bottom of cuff. Do not sew through double thickness.

Finished Measurements:
One size, fits adult head
Approximately 19" circumference x 11.5" long

Materials: Approximately 150 yards worsted weight yarn

US size 6 or US size 7 needles, or size needed to get gauge

Tapestry needle

Gauge: 18 stitches & 32 rows = 4" square in garter stitch

SEAFARER'S WATCH CAP

• CROCHET •



• Designer: Beth Hall •

Chain 41 loosely.

Row 1: Slip st in second chain from hook and next 5 chs, sc in next 6 chs, hdc in next 14 chains, slip st in last 14 chs. [40 st] Ch 1, turn.

Note: Beginning with Row 2, work all stitches in the back loop only.

Row 2: Slip st in the first 14 slip st of the previous row, ch 1, turn. Slip st in the 14 slip st just completed (working back towards lower edge; these will create the cap's "ribbing"), ch 1, turn. Slip st in the 14 slip st just completed, hdc in the next stitch from row 1 and next 13 stitches, sc in next 6 st, slip st in the next 3 stitches, ch 1 and turn, leaving the last 3 slip stitches unworked. [37 st]

Row 3: Slip st in the next 3 st, sc in next 6 st, hdc in next 14 st, slip st in last 14 st. [37 st] Ch 1, turn.

Row 4: Slip st in the first 14 slip st of the previous row, ch 1, turn. Slip st in the 14 slip st just completed (back

towards lower edge to create the cap's "ribbing"), ch 1, turn. Slip st in the 14 slip st just completed, hdc in the next stitch from row 3 and next 13 stitches, sc in next 6 st, slip st in the next 3 stitches, then slip st in last 3 unworked stitches from row 1. [40 st] Ch 1, turn.

Row 5: Slip st in the next 6 st, sc in next 6 st, hdc in next 14 st, slip st in last 14 st. [40 st] Ch 1, turn.

Repeat rows 2-5, 12 times, ending with row 5, for a total of 53 rows, or to desired size. Break off yarn, leaving a long enough tail to sew the side seam and close the top. Sew side seam, catching the remaining side of the starting chain and the back loop of the last row. At top of hat, secure seam, then use a yarn needle to "catch" top of slip stitch for each row; gather tightly and secure. Weave any yarn ends in to finish.



Skill Level 2:



Finished Measurements:
Fits 21-22" head

Materials: Approximately 200 yds worsted weight yarn

Crochet hook: Size H hook (or size needed to achieve gauge)

Gauge: 12 hdc = 4"; 2 rows hdc = 1"

Abbreviations:
ch = chain(s)
hdc = half double crochet
sc = single crochet
st(s) = stitch(es)

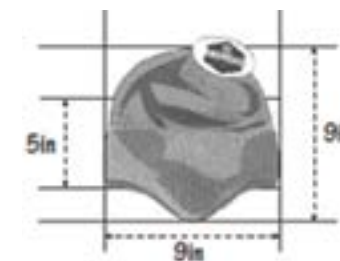
1 8 9 8 H A T

• K N I T •



This is Kristine Byrnes's winning design in SCI's pattern contest for a hat incorporating earflaps. The construction of this hat was inspired by one pictured in a magazine published around 1910. Knitting the headband side-to-side provides a double layer of garter stitch to keep the ears warm, and allows for easy shaping of the earflaps. The edges of the headband are folded together along a slipped stitch seam, and picked up together to finish in the round. The hat has plenty of depth so that it can be pulled low on the forehead, and the earflaps will naturally cup around the ears to keep them warm.

This finished measurement is one size which fits an adult head, 19" circumference x 8" deep.



• Designer: Kristine Byrnes •

Pattern Rows

Row A (RS): Sl 1, knit to marker, sl m, k3, sl m, knit to end.

Row B (all WS rows): Sl 1, knit to marker, sl m, sl 3 wyif, sl m, knit to end.

Row C (RS): Sl 1, knit until 1 st before marker, kfb, sl m, k3, sl m, kfb, knit to end. (2 sts inc)

Row D (RS): Sl 1, knit until 2 sts before marker, k2tog, sl m, k3, sl m, ssk, knit to end. (2 sts dec)

Directions: Using provisional cast on, cast on 27 stitches, leaving a 20" tail. (If you prefer to seam instead of graft the ends together, use your preferred cast-on, but leave the same length tail.) Switch to project yarn and work the set up row (WS): Sl 1, k11, pm, sl 3 wyif, pm, k12.

Back of Headband: Work Rows A & B 8 times. (18 total rows, including cast on and set up row)

Right Earflap: Work Rows C & B 9 times. (45 sts; 36 total rows) Work Rows A & B 3 times. (42 total rows) Work Rows D & B 9 times. (27 sts; 60 total rows)

Front of Headband: Work Rows A & B 24 times. (108 total rows)

Left Earflap: Work Rows C & B 9 times. (45 sts; 126 total rows) Work Rows A & B 3 times. (132 total rows) Work Rows D & B 9 times. (27 sts; 150 total rows)

Finish Back of Headband: Work Rows A & B 9 times. (168 total rows)

Do not cut working yarn. Graft or seam the two ends together using the tail. Weave in end. Fold headband in half along the slip stitch ridge in the middle of the headband. Pick up stitches from the front and back of the band simultaneously to attach the front and back together. To do this, starting from the side facing you,

slide the circular needle (or a crochet hook) through one bar on the side of the front band, then through the matching bar on the back band; pick up the working yarn and bring it back through both bars. One stitch will now connect the front and back bands together; place this stitch on the right-hand needle. Continue along the circle formed by the band until 84 stitches have been picked up.

Place marker for beginning of the round (at back seam) and join to work in the round, being careful not to twist.

Hat Body: Knit in the round until hat measures 5" from bottom edge (non-earflap) of hat. (See schematic).

Shape Crown: *K10, k2tog, repeat from * to end of round. (77 sts) Knit 2 rounds.

*K9, k2tog, repeat from * to end of round. (70 sts) Knit 2 rounds.

*K8, k2tog, repeat from * to end of round. (63 sts) Knit 1 round.

*K7, k2tog, repeat from * to end of round. (56 sts) Knit 1 round.

*K6, k2tog, repeat from * to end of round. (49 sts) Knit 1 round.

*K5, k2tog, repeat from * to end of round. (42 sts) Knit 1 round.

*K4, k2tog, repeat from * to end of round. (35 sts) Knit 1 round.

*K3, k2tog, repeat from * to end of round. (28 sts) Knit 1 round.

*K2, k2tog, repeat from * to end of round. (21 sts) Knit 1 round.

*K1, k2tog, repeat from * to end of round. (14 sts)

K2tog 7 times. (7 sts)

Finishing Cut yarn, leaving a 6" tail. With tapestry needle, pull through remaining stitches tightly, secure end on inside. Weave in all ends.

Skill Level 3:

Materials:

- Approximately 180 yards worsted weight yarn
- Scrap yarn for the provisional cast on
- US size 7 16" circular needle and set of dpns, or size needed to get gauge
- Crochet hook, if desired for provisional cast on and/or picking up stitches on headband
- Two stitch markers
- Tapestry needle

Gauge: 20 stitches & 24 rounds = 4" square in stockinette stitch
20 stitches & 36 rows = 4" square in garter stitch

Abbreviations:
pm = place marker
sl m = slip marker
wyif = with yarn held in front of work
sl x = slip specified number of stitches purlwise
kfb = knit into the front and back of the same stitch to make two stitches (increase)
k2tog = knit two together (decrease)
ssk = slip 2 stitches knitwise one at a time to the right-hand needle, insert left-hand needle in front of these 2 stitches, and knit them together (decrease)

1 8 9 8 H A T

• C R O C H E T •



Skill Level 3:

Finished Measurements:
Approximately 10" by 6.5/7"

Materials: Approximately 160 yards worsted (Category 4) yarn.
Sample worked in Caron One Pound.

US I hook or size needed for correct gauge

6 stitch markers

Finishing needle

Gauge: At the end of rounds 1-3, measuring edge-to-edge through the center should be 4" across; 6 sc = 2" & 3 rnds= 1".

Abbreviations:
ch - chain
dc - double crochet
FLO - front loop only
hdc - half double crochet
sc - single crochet
sl st - slip stitch
st - stitch(es)

• **Designer: Beth Hall** •

Note: To complete both ear flaps, before starting, you will need to make a small skein of about 30 yards of yarn, or else have 2 skeins of yarn to use.

Chain 4.

Rnd 1 (right side): Work 11 dc in 4th chain from hook. Sl st in top of ch-4 to join. Pull center tight. (12 dc)

Note: Beginning Round 2 and following, ch 2 does not count as a dc.

Rnd 2: Ch 2. 2 dc in same st as join, then 2 dc in each dc around. Sl st in top of first dc to join. (24 dc)

Rnd 3: Ch 2. 2 dc in same st as join, 1 dc in next, *2 dc in next st, 1 dc in next; repeat from * around. Sl st in top of first dc to join. (36 dc)

Rnd 4: Ch 2. 2 dc in same st as join, 1 dc in each of next 2 st, *2 dc in next st, 1 dc in each of next 2; repeat from * around. Sl st in top of first dc to join. (48 dc)

Rnd 5: Ch 2. 2 dc in same st as join, 1 dc in each of next 3 st, *2 dc in next st, 1 dc in each of next 3; repeat from * around. Sl st in top of first dc to join. (60 dc)

Rnd 6: Ch 2. 2 dc in same st as join, 1 dc in each of next 9 st, *2 dc in next st, 1 dc in each of next 9; repeat from * around. Sl st in top of first dc to join. (66 dc)

Rnd 7: Ch 1. Sc in same st as join, and each st around. Join in 1st sc with sl st. (66 sc)

Rnd 8: Ch 2. Dc in same st. Dc in next st and each st around. Sl st in top of first dc to join. (66 dc)

Rnds 9 - 10: Repeat rnds 7 - 8.

Rnd 11: Ch 1. Sc in same st as join, and each st around. Join in 1st sc with sl st. Ch 1. (66 sc)

Work outside ear flap (designated "a" rounds):

Rnd 12a: Working in FLO, sc in same st as join, and each st around. Join in 1st sc with sl st. In the last sc worked, put a stitch marker in the corresponding back loop: this will be the first stitch of Rnd 12b. Ch 1. (66 sc)

Rnds 13a & 14a: Working in BOTH LOOPS in all remaining "a" rounds, sc in same st as join and each st around. (66 sc)

Rnd 15a: Sc in same st as join and next 13 st. In next 3 st work 1 hdc; place st marker in 1st hdc worked. Sc in next 31 st. In next 3 st work 1 hdc; place st marker in 1st hdc worked. Sc in last 15 st. Join in 1st sc with sl st. Ch 1. (66 sc)
(Note: Use of the stitch markers is optional, but may be found useful.)

Rnd 16a: Sc in same st as join and next 12 st. In next 5 st work 1 hdc; place st marker in 1st hdc worked. Sc in next 29 st. In next 5 st work 1 hdc; place st marker in 1st hdc worked. Sc in last 14 st. Join in 1st sc with sl st. Ch 1. (66 sc)

Rnd 17a: Sc in same st as join and next 10 st. In next 7 st work 1 hdc; place st marker in 1st hdc worked. Sc in next 29 st. In next 7 st work 1 hdc; place st marker in 1st hdc worked. Sc in last 12 st. Join in 1st sc with sl st. Ch 1. (66 sc)

Rnd 18a: Sc in same st as join and next 9 st. In next 3 st work 1 hdc; 2 dc in next st, 2 dc in next, 1 hdc in each of next 3 st; place st marker in first dc worked. Sc in next 29 st. In next 3 st work 1 hdc; 2 dc in next st, 2 dc in next, 1 hdc in each of next 3 st; place st marker in first dc worked. Sc in last 11 st. Join in 1st sc with sl st. Ch 1. (70 st) For now drop this yarn (do NOT cut!) & place a stitch holder to hold work at this point. You will now do the inside ear flap using the second skein before picking up from this point to finish the outside flap.

Work inside ear flap (designated "b" rounds):

Rnd 12b:

With wrong side of the hat facing you, crocheting in the opposite direction of the outside earflap, working in the remaining loop from Rnd 11: Join yarn in marked back loop from the last FLO sc of round 12a. Ch 1. Sc FLO in same st, and each st around. Join in 1st sc with sl st. (Make sure you have 66 sc in this round.)

Rnds 13b & 14b: Ch 1. Working in BOTH LOOPS in all remaining "b" rounds, sc in same st as join, and each st around. Join in 1st sc with sl st. (66 sc)

Rnd 15b: Ch 1. Sc in same st as join and next 14 st. In next 3 st work 1 hdc; place st marker in 1st hdc worked. Sc in next 33 st. In next 3 st work 1 hdc; place st marker in 1st hdc worked. Sc in last 12 st. Join in 1st sc with sl st. Ch 1. (66 sc)

Rnd 16b: Sc in same st as join and next 13 st. In next 5 st work 1 hdc; place st marker in 1st hdc worked. Sc in next 29 st. In next 5 st work 1 hdc; place st marker in 1st hdc worked. Sc in last 13 st. Join in 1st sc with sl st. Ch 1. (66 sc)

Rnd 17b: Sc in same st as join and next 13 st. In next 7 st work 1 hdc; place st marker in 1st hdc worked. Sc in next 29 st. In next 7 st work 1 hdc; place st marker in 1st hdc worked. Sc in last 9 st. Join in 1st sc with sl st. Ch 1. (66 sc)

Rnd 18b: Sc in same st as join and next 13 st. In next 3 st work 1 hdc, 2 dc in next st, 2 dc in next, 1 hdc in each of next 3 st; place st marker in last dc worked. Sc in next 29 st. In next 3 st work 1 hdc, 2 dc in next st, 2 dc in next, 1 hdc in each of next 3 st; place st marker in last dc worked. Sc in last 7 st. Join in 1st sc with sl st (or use an invisible join). (70 st) Cut yarn & weave all in ends.

Closing the earflaps:

Rnd 19: Turn hat to right side out. Line up inside and outside ear flaps' stitches using the st markers placed at dc sts. With the outside flap facing you, working in BOTH loops of the inside and outside ear flaps from Rnds 18a & b, sc in each st around, except in each of the 4 dc on flaps (at the stitch markers), work 2 sc in each dc. Join in 1st sc with sl st (or use an invisible join). (78 st) Cut yarn. Weave in all remaining ends.

For a striped version of this hat, work the double crochet rounds (Rounds 1-6, 8 & 10) in one color, and single crochet rounds (Rounds 7, 9, & 11-19) in a contrasting color.

SCARF AND COWL PATTERNS

MARINER'S SCARF • CROCHET •

Skill Level 2:



MATERIALS

300 yds worsted weight yarn Size G
crochet hook

GAUGE

4 dc stitches = 1

SIZE

Finished Size:
7 1/2" x 42"

ABOUT THIS PATTERN

This crochet pattern mimics the basket weave of its knit cousin.

DIRECTIONS

Chain 32 loosely

Row 1: Right side, Double Crochet (DC) in 4th chain from hook and in remaining 29 chains.

Row 2: Turn. Chain 3 (Counts as first DC, now and throughout). *DC in back loop of next 4 DC. DC in front loop of next 4 DC. Repeat from * through last DC. End with DC in top stitch of turning chain.

Row 3: Repeat row 2 to desired length, ending with last row on right side. Fasten off.



MARINER'S SCARF • KNIT •



About this Pattern: Our classic basketweave pattern is a great choice for our river mariners.

Note: This scarf begins and ends with 8 rows of a garter stitch border.

Each row of the scarf begins and ends with 2 knit stitches to provide a garter stitch edge. The basketweave pattern develops as you alternate a knit block above a purl block.

Tips for adjusting size. If your gauge is too large, cast on 12 fewer stitches. If your gauge is too small, cast on 12 more stitches. This increases or decreases the basketweave stitch pattern by one repeat.

Cast on 40 stitches.
Knit 8 rows.

Rows 1-6: K2, *k6, p6, repeat from * to last 2 sts, k2.

Rows 7 & 8: Knit across.

Rows 9-14: K2, *p6, k6, repeat from * to last 2 sts, k2.

Rows 15 & 16: Knit across.

Repeat Rows 1-16 until the piece is approximately 38" from beginning, ending after having worked either Row 6 or Row 14.

Knit 8 rows.

Finishing: Bind off loosely. Weave in ends.



Skill Level 2:



Finished Measurements:
Approximately 8" x 39"

Materials: Approximately
300 yards of worsted
weight yarn

US size 7 needles, or size
needed to get gauge

Tapestry needle

Gauge: 18 sts & 24 rows
= 4 inches square in
basketweave stitch pattern

INSPIRATION SCARF

• CROCHET •



(formerly Scrappy Scarf)

• Tech Editor: Beth Hall •

Note: Chain 3 at the beginning of each row counts as 1 dc.

Chain 130 loosely with color A. (You may want to go up a hook size for this chain.)

Row 1: Working in back bump of each chain, dc in 4th back bump from hook and in each ch across. Cut yarn with 6" tail. (128 sts)

Row 2: Turn work. Using color B, work a standing dc in the last st of the previous row (or slip st join to the stitch and chain

3). Work a dc in the next st and each st across. Cut yarn with 6" tail. (128 sts)

Row 3: Using color C, repeat Row 2.

Continue in this manner until scarf measures 6½-7" wide. Securely finish all ends. (For safety reason, fringe is not permissible.)

For a variation, use single crochet or half double crochet stitches in place of the dc in the rows, striping as you like, until the scarf measures the proper width.

Skill Level 1:



Finished Measurements:
6½-7" wide by
48-50" long

Materials: Worsted (Cat 4),
approximately 180 yards.

US H (5 mm) or size
needed for correct gauge

Two stitch markers

Yarn needle for finishing

Gauge: 2 rows in dc = 1.5";
5 dc = 2"

Abbreviations:
ch = chain(s)
dc = double crochet
st(s) = stitch(es)

SEAFARER'S SCARF

• KNIT •



About this Pattern: The original seafarer scarf worn the world over!

Note: The first and last 14 inches of the scarf are knit in garter stitch.

The 18 inches of k4, p4 ribbing in the middle make a narrow-looking neck. This makes the scarf more dense and warmer around the neck without adding extra bulk.

Tip: Slip the first stitch of each row purlwise to keep the edges tidy.

Cast on 32 stitches.

Knit even for 14".

*K4, p4, repeat from * across row for 18".

Knit even for 14".

Finishing: Bind off loosely. Weave in ends.

Skill Level 1:



Finished Measurements:
Approximately 6.5" x 46"

Materials: Approximately
300 yards of worsted
weight yarn

US size 6 or 7 needles, or
size needed to get gauge

Tapestry needle

Gauge: 20 sts & 36 rows
= 4 inches square in
garter stitch





C O W L

• K N I T •

About this pattern: No loose ends to get caught up in equipment. The cowl stays safely tucked into workwear to keep necks cozy.

Note: Use your preferred method of knitting in the round, e.g. one 16" circular needle, a set of double-pointed needles or two circulars.

Use a stretchy cast and bind off to maximize stretching over the head and onto the neck. We don't want the mariners to struggle to get the cowl on!

This cowl should be approximately 7" long, which ensures it can stay safely tucked into workwear.

Cast on 88 stitches. Place marker and join for working in the round, being careful not to twist.

Round 1: *K2, p2, repeat from * to end of round.

Repeat Round 1 until piece measures 7" from beginning.

Finishing: Bind off loosely in pattern. Weave in ends.

Slip over a head and wear!

Skill Level 2:



Finished Measurements:
7" long, approximately
8" wide

Adult medium, stretches
to approximately 23"
circumference

Materials: Approximately
150 yards worsted
weight yarn

US size 8 16" circular
needle, or size needed to
get gauge

Stitch marker

Tapestry needle

Gauge: 16 stitches & 24
rounds = 4" in k2, p2
ribbing, slightly stretched

C O W L

• C R O C H E T •



• Designer: Beth Hall •

Special Stitch: Double Slip Stitch (Dbl-slst)—Insert hook in same space as last stitch worked, yo and pull up a loop, insert hook under both loops of next st, yo, and pull this loop through both loops on hook. (1 stitch completed.)

Note: The chain 2 at the beginning of a row counts as an hdc.

Chain 26 loosely.

Row 1 (right side): Sc in back bump of 2nd chain from hook and each across. Ch 1, turn. (25 sc)

Row 2: Sl st under both loops of 1st st. Dbl-slst, starting in same st and next st, and across for 23 stitches. At the last stitch, pull up a loop under the same stitch, then pull up a loop in the chain-2

space of the previous row—3 loops on hook—this yarn over 1 more time and pull through all 3 loops. Ch 2, turn.

(25 st) (The piece should measure between 6.5 and 7"; if not, adjust number of starting chains accordingly and start over.)

Row 3: Hdc in BLO in 2nd stitch and each stitch across. Ch 1, turn. (25 hdc)

Repeat Rows 2 & 3 until piece measures 20", ending with Row 2. Closing Row: With right sides facing out (wrong sides together), sl st FLO of the last row worked and the BLO of Row 1 across. Cut yarn and finish ends.



Skill Level 1:



Finished Measurements:
Approximately 10" by 6.5/7"

Materials: Approximately
150 yards worsted (Category
4) yarn. Sample worked in
Caron One Pound.

US I hook or size needed for
correct gauge

Finishing needle

Gauge: 7 hdc = 2"

Abbreviations:

ch - chain
BLO - back loop only
Dbl-slst - Double Slip
Stitch (see special stitches)
dc - double crochet
FLO - front loop only
hdc - half double crochet
sc - single crochet
sl st - slip stitch
st - stitch(es)
yo - yarn over

DITTY BAG



Skill Level 1:



Finished Measurements:
Approximately 12" by 15"

Materials: 1 yard of sturdy
cloth (does not have to be
Christmas themed)

1 pair of 30" shoelaces,
or 2 - 30" lengths of
twill tape, cording, or
macrame braid

About this pattern: Ditty
bags are attractive and
practical gift bags. "Ditties"
are used to pack handmade
garments, a modest
number of nonperishable
snacks, several travel-size
toiletries, and a Christmas
card.

Instructions

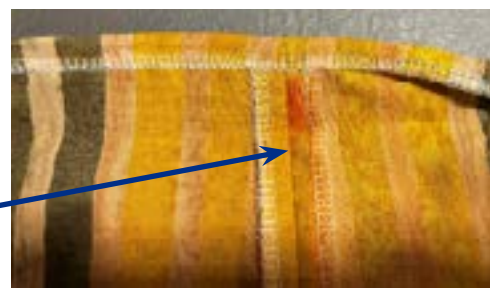
Cut a 35" x 13" piece rectangle of fabric.
Edge stitch side seams (and ends if necessary).



Fold fabric in half lengthwise so it measures 17.5" x 13"
(keeping right sides together).

Stitch both side seams with a 1/2" seam allowance.

On the top edge, turn down a 1/2" and stitch hem.
Make sure to fold the side seams open as you go
around.



Fold the top down another 2" and stitch this edge down
close to the bottom edge. Again, make sure that the side
seams are folded open and are lying flat.
Stitch a second row 3/4" from the top edge of the bag to
make a casing channel that is approximately 1" wide.

Turn the bag right side out. With a seam
ripper or fine scissors, cut stitches on the
outside of the bag only to open 1" casing
channel at each side.



Insert 1 shoelace in one seam opening feeding
it completely around inside the casing and exit-
ing at the same spot. Knot ends together.
Repeat in the other seam opening with the sec-
ond shoelace. Laces should emerge from the
outside of the bag, and when pulled simultane-
ously close the bag.





R E S O U R C E S

A D D R E S S A N D C O N T A C T I N F O R M A T I O N

Joanne Bartosik, Senior Manager of Development & Christmas at Sea

The Seamen's Church Institute
118 Export Street
Port Newark, NJ 07114

Telephone: 973.589.5828
Mobile: 973.289.6954
Email: CAS@seamenschurch.org
Website: seamenschurch.org

F O L L O W U S

Follow [Facebook.com/seamenschurch](https://www.facebook.com/seamenschurch) for up-to-date stories and news about SCI, photographs of CAS donations and shout outs to volunteers.

Untangled is Christmas at Sea's member Facebook page. Untangled is an interactive forum for questions and answers about CAS. You'll gain insight and tips about our patterns and connect with others who share your passion for knitting/crocheting and are united in support of mariners. [Facebook.com/groups/untangled.sci](https://www.facebook.com/groups/untangled.sci).

Christmas at Sea has an active group on *Ravelry.com*, an online community of fiber artists.

Christmas at Sea can be found on [Instagram.com/ChristmasAtSea](https://www.instagram.com/ChristmasAtSea)

C A S A N G E L S

CAS has a team of experienced volunteers eager to help other CAS knitters and crocheters with questions about our specially designed patterns. Simply post your question on our [Untangled Facebook page](https://www.facebook.com/untangled) for responses to your most pressing questions.

Not on social media? No worries. Email CAS@seamenschurch.org with your question(s) specifying the pattern you are working on and provide your contact information. We will introduce you by email to a CAS Angel who will be your personal coach and mentor.

No need to struggle—reach out. We've got Angels!



K E E P I N T O U C H

For a complimentary subscription to one or both of our biannual print publications, *The Lookout*, for organization-wide information, and *The Knit Before Christmas*, our magazine for the CAS community, please complete the form on our website: seamenschurch.org. On that page, you may also subscribe to our monthly digital newsletter, *The Masthead* to stay abreast of current news.



ACKNOWLEDGMENTS

This CAS Handbook was a labor of love and very much a group effort. Our deepest appreciation goes out to Nancy Harrington, Master Knitter and Certified Technical Editor, extraordinaire, who so generously gave of her time, talent, and passion to make this publication special.

Accolades to Beth Hall, certified Master Crocheter, for making sure our crochet patterns are accurate and clear and to Jeanette Shields for tirelessly working on prototypes.

Christmas at Sea Angels are simply the best advisors, coaches, and mentors. Their experience with our patterns was invaluable in compiling this handbook.

We would like to extend our gratitude to the hundreds of volunteers worldwide who generously support this wonderful program. Our mission is only possible because of your efforts.

SCI is guided by the core values of compassion, dependability, and integrity.

THE ROPER LEGACY SOCIETY

The Roper Legacy Society acknowledges the thoughtful generosity of individuals who have included the Seamen's Church Institute in their estate plans as an important philanthropic commitment to furthering the Institute's mission. Through planned gifts, Roper Legacy Society members create a tradition that sustains and enables SCI to continue to meet the immediate needs of mariners through pastoral care, continuing education and training, and advocacy.

For more information on planned giving, email Amy Mugavero, Director, Advancement & Strategic Initiatives, amugavero@seamenschurch.org.

This manual features a sampling of official CAS patterns. The full collection is available online at seamenschurch.org



1898 Hat



Crochet Seafarer's Watch Cap



Seafarer's Stripey Crew Socks



Anchors Aweigh Hat



Ditty Bag



Seafarer's Beanie



Cowl



Double Knit Mariner's Cap



Seafarer's Scarf



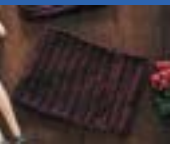
Crochet 1898 Hat



Helmet



Seafarer's Socks



Crochet Cowl



Inspiration Scarf



Seafarer's Vest



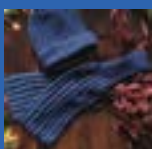
Crochet Mariner's Scarf



Mariner's Scarf



Seafarer's Watch Cap In the Round



Crochet Resilience Scarf



NOLA's Slippers



Watch Cap



Crochet Inspiration Scarf



Oliver's Cap

FUN FACTS ABOUT SIZING HATS

To ensure that hats fit well and are comfortable, we kindly ask that you try them on before sending them. If they fit you well, they will likely fit mariners too. Here are some other quick tips for sizing hats:

Gauge matters: The gauge (how many stitches per inch) of your knitting and crocheting impact the finished hat size, so it's crucial to check your gauge before starting a new project.

Measure the Circumference: Aim for a circumference of around 20-22 inches. This is the average size for most adult heads. You can measure the circumference of your own head as a guide.

Stretches Matter: Knit or crocheted hats stretch, so even if the hat feels a little snug when you try it on, it will loosen slightly over time.

Try Different Stretches: You can also check the stretch by gently pulling on the fabric. A well-fitted hat should stay snug but not tight.

Thank you for your efforts and for helping us ensure hats will be the right fit!



Christmas at Sea

THE SEAMEN'S CHURCH INSTITUTE



Please mail gifts to:

Christmas at Sea
The Seamen's Church Institute
118 Export Street
Port Newark, NJ 07114